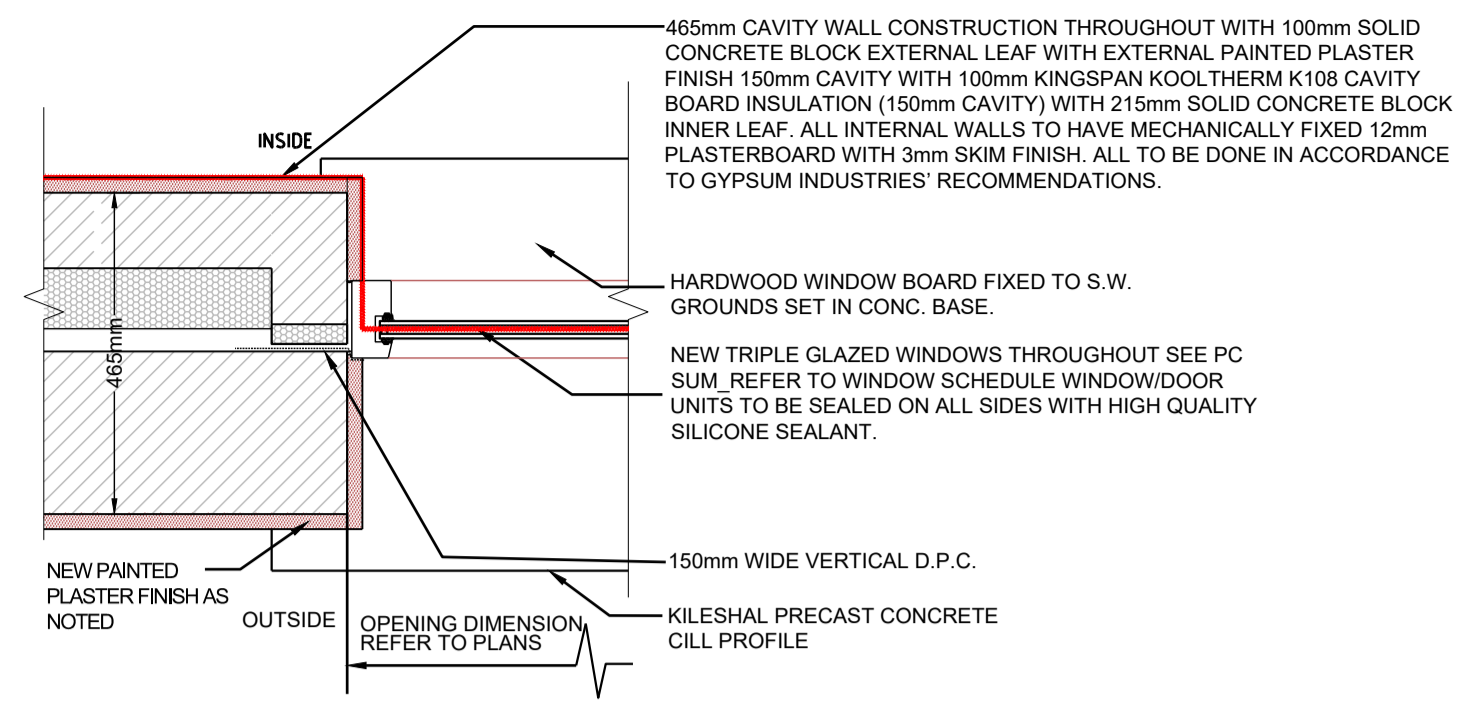
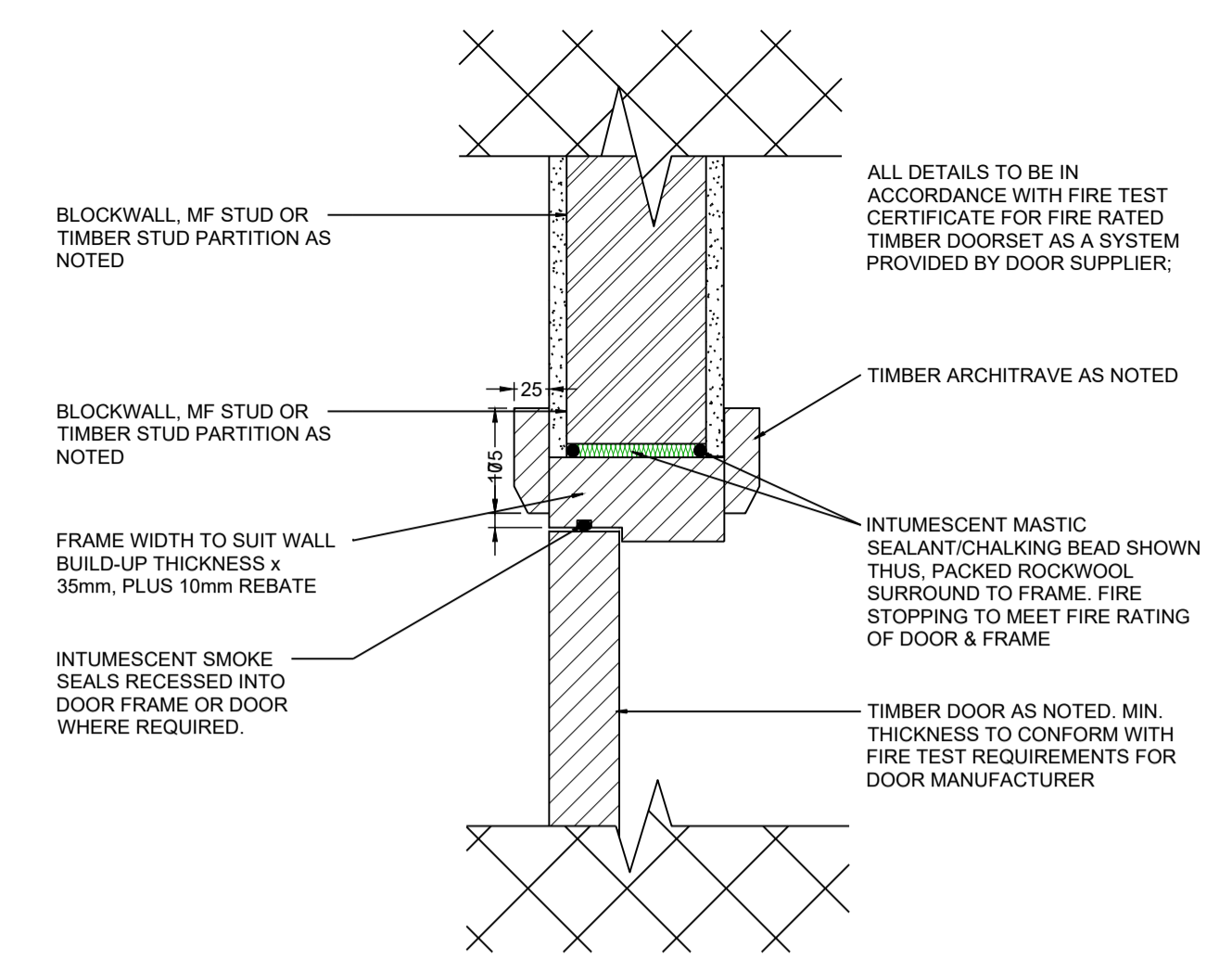


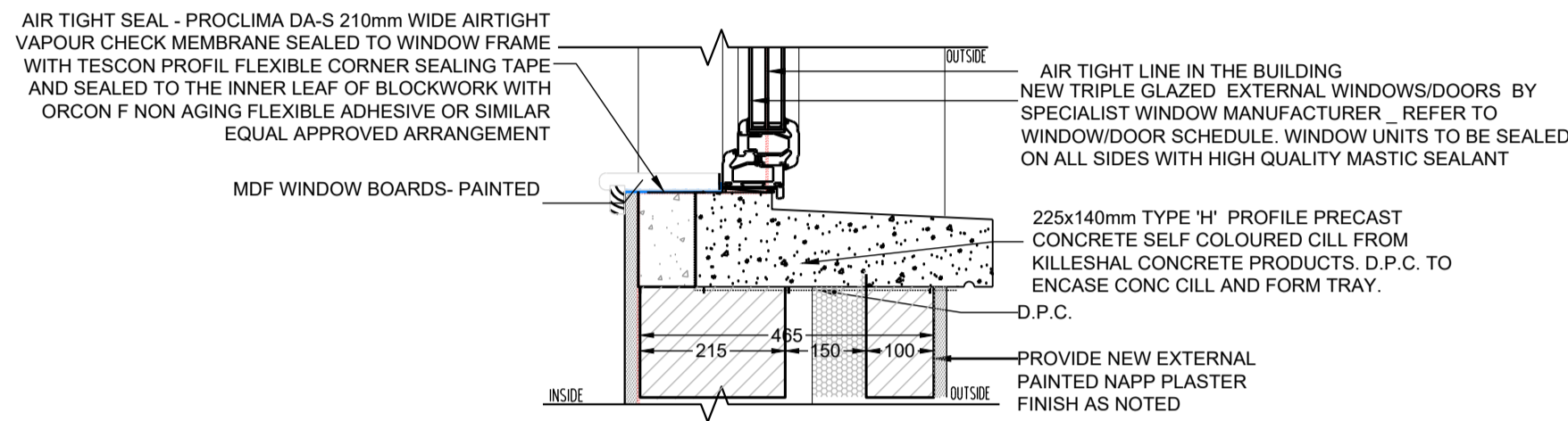
TYP. WINDOW HEAD SECTION DETAIL
SCALE 1:10



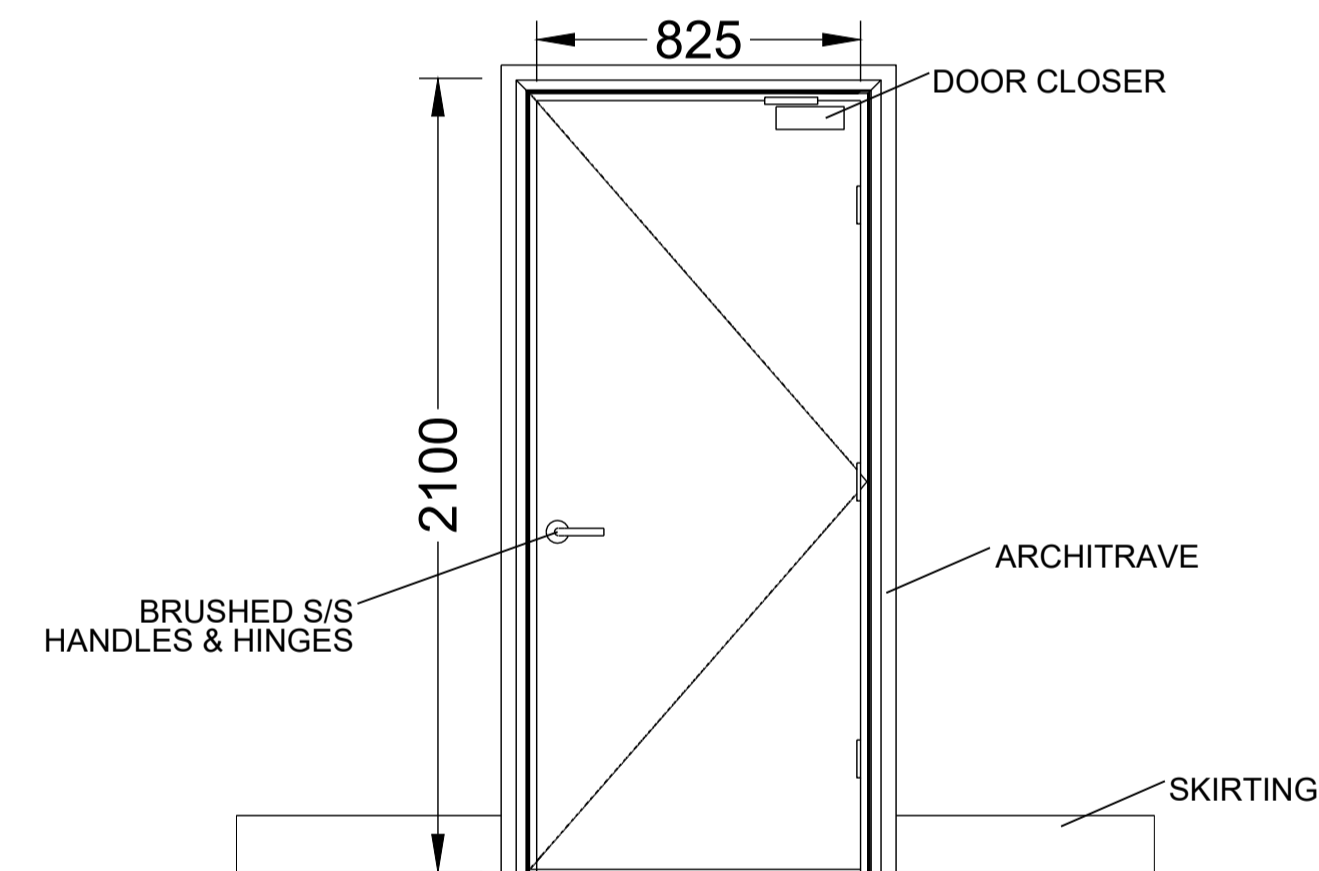
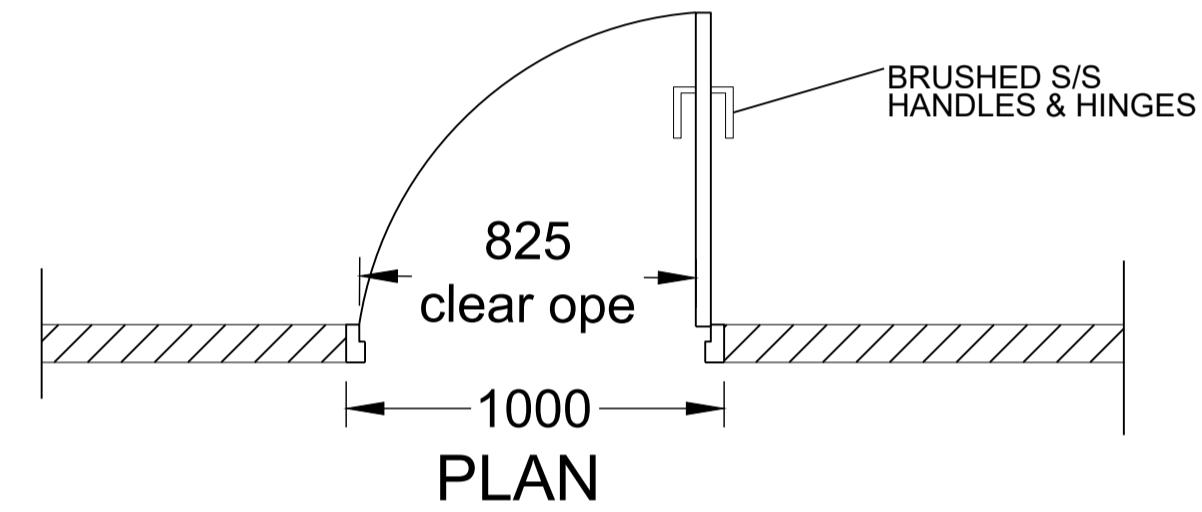
TYP. PLAN DETAIL AT WINDOW REVEAL
SCALE 1:10



INTERNAL DOOR JAMB/HEAD DETAIL
SCALE 1:5



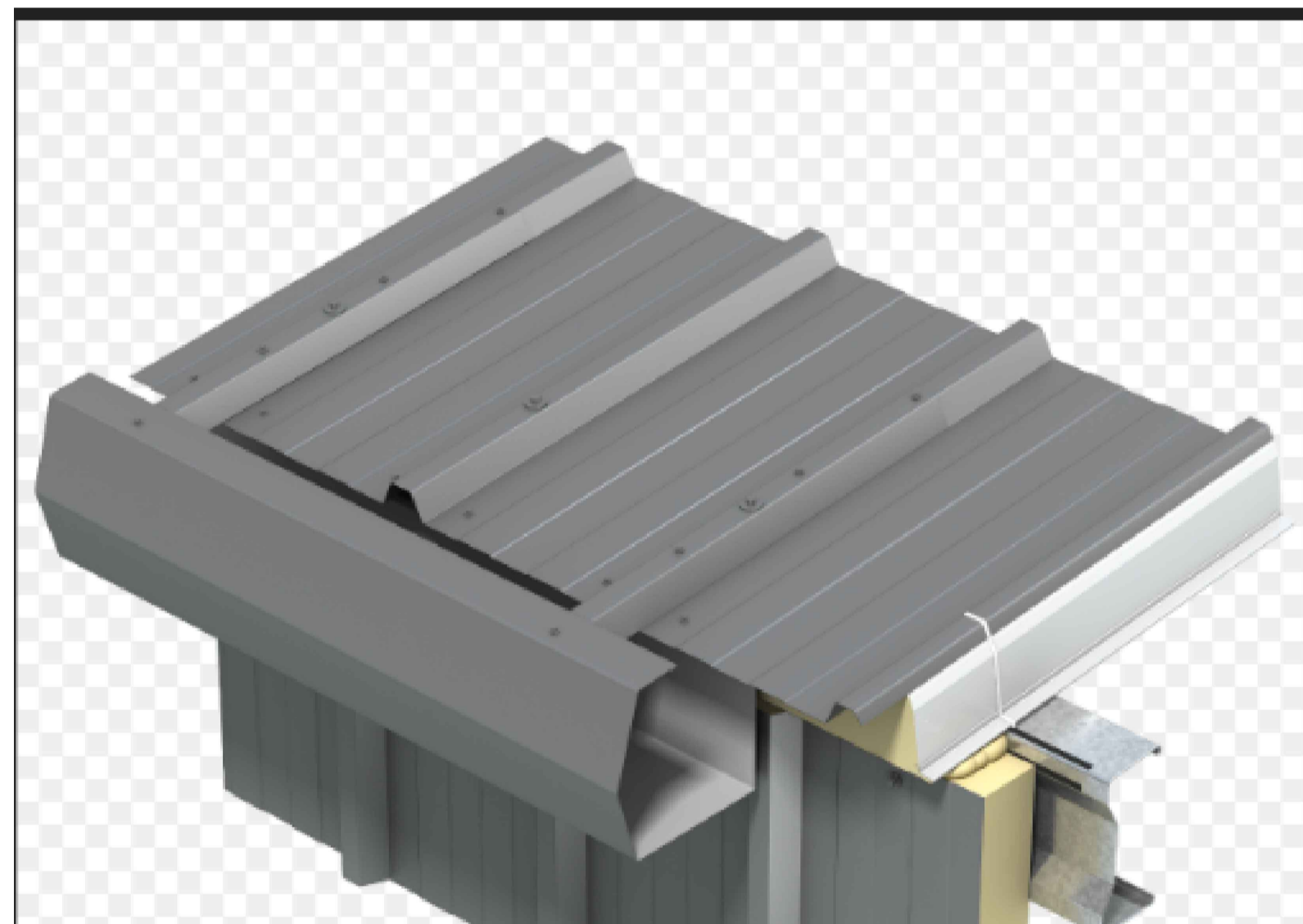
TYP. WINDOW CILL SECTION DETAIL
SCALE 1:10



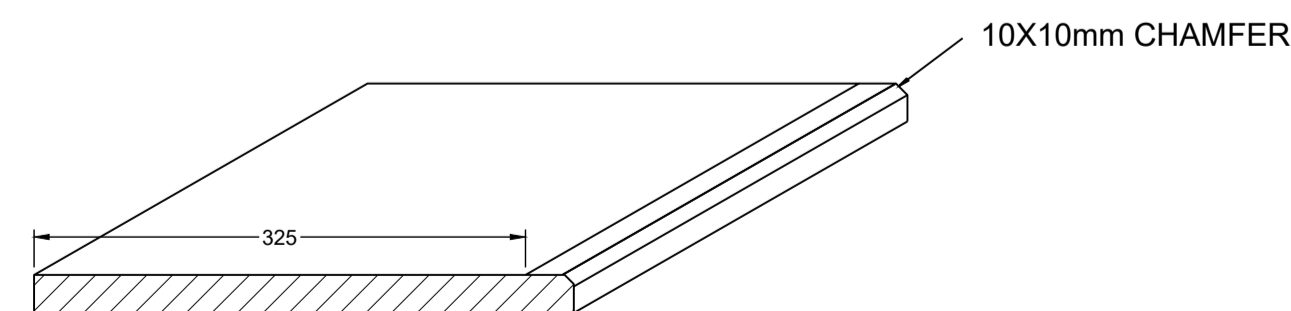
INTERNAL DOORS (FD30s)

- STRUCTURAL OPE HEIGHT 2100mm
- STRUCTURAL OPE WIDTH 1000mm
- OAK VENEER DOOR & PRE FINISHED WITH RED DEAL
- 130x44mm REBATE FRAMES - PAINTED FINISH
- MIN. 825mm CLEAR WIDTH DOOR OPES

TYPICAL INTERNAL DOOR DETAIL
SCALE 1:20



HIGH LINE GUTTER
SCALE NTS



MATERIALS
150mm HIGH x 25mm THICK WITH 10x10mm CHAMFERED TIO EDGE SOLID RED DEAL OR MDF SKIRTING BOARD, SCREWED & PLUGGED AT 600mm CENTRES TO WALLS. ALLOW FOR CLEANING, KNOTTING, SANDING AND ASSOCIATED PREPARATION PRIOR TO APPLYING FINISHES

FINISH
ALL FINISHED IN 1 COAT OF UNDERCOAT (APPLIED BEFORE FIXING MEMBERS) AND 2 COATS GLOSS PAINT FINISHING COATS

TYPICAL SKIRTING DETAIL
SCALE 1:5

MATERIALS
25mm THICK X 325mm WIDE, SOLID RED DEAL OR MDF COMPLETE WITH COUNTERSUNK FIXINGS (PLUGGED) INTO CILL. CHAMFERED SOLID FRONT EDGE

FINISH
ALL FINISHED IN 1 COAT OF UNDERCOAT AND 2 COATS FINISHING COATS OF GLOSS PAINT

TYPICAL WINDOW CILL BOARD DETAIL
SCALE 1:10

MATERIALS
75mm HIGH x 25mm THICK WITH 10x10mm CHAMFERED EDGE SOLID RED DEAL OR MDF ARCHITRAVE, FIXED AT 600mm CENTRES DOOR FRAME. ALLOW FOR CLEANING, KNOTTING, SANDING AND ASSOCIATED PREPARATION PRIOR TO APPLYING FINISHES

FINISH
ALL FINISHED IN 1 COAT UNDERCOAT (APPLIED BEFORE FIXING MEMBERS) AND 2 FINISHING COATS GLOSS PAINT

TYPICAL ARCHITRAVE DETAIL
SCALE 1:10

GENERAL NOTES

ALL DIMENSIONS AND LEVELS TO BE CONFIRMED ON SITE.

ALL LEVELS RELATE TO TBM 100.00m (EX. FFL)

ALL CONCRETE IS TO BE GRADE C30/37 U.N.O.

ALL LEAN MIX CONCRETE BLINDING IS TO BE GRADE C12/15.

CONCRETE TO BE PLACED IN ACCORDANCE WITH THE SPECIFICATIONS AND BS8110.

THE CONTRACTOR SHALL PROVIDE ALL NECESSARY TEMPORARY WORKS AND SHORING DURING THE COURSE OF THE WORKS.

THE DESIGN, INSTALLATION AND MAINTENANCE OF TEMPORARY WORKS SHALL BE THE RESPONSIBILITY OF THE CONTRACTOR, UNLESS DETAILED IN THE DRAFT DRAWINGS.

STRENGTH OF ALL BLOCKWORK TO BE 7.5N U.N.O.

ALL LINTELS SHALL HAVE MINIMUM 225mm BEARING EACH SIDE OF OPE.

ALL STEEL BEAMS SHALL HAVE MINIMUM OF 450mm BEARING EACH SIDE OF OPE.

ALL DPM'S, DPC'S, INSULATION AND RADON DETAILS.

Rev.	Date	Amendment	By
A	14/05/26	DOOR OPES REVISED TO 1m ST OPES	AT
0	08/04/26	ISSUED FOR TENDER	AT

Issued For: **TENDER**

Project:	GORMANSTOWN CAMP HANGER LEAN TO NEW OFFICE BLOCK
Drawing Title:	DETAILS

CLIENT:
CAPTAIN CIARAN CAREY - DEFENCE FORCES

MALACHI CULLEN
CONSULTING ENGINEERS LTD
8 CENTRE COURT, BLVRY BUSINESS & COMMERCIAL PARK, ATHLONE, CO. WESTMEATH N37 A710
T: 090 6420364 E: info@mcullen.ie W: www.mcullen.ie

SCALE @	A1 1:20	Drawing Number:	Rev.
DATE:	APRIL 2026	26-009 T-08	A
DRAWN:	A TROY		
CHECKED:	JD		